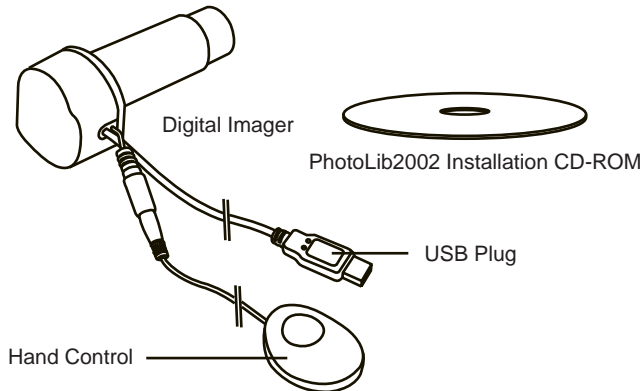


# DIGITAL IMAGER USER'S MANUAL

## ABOUT THE DIGIAL IMAGER PACKAGE



## SYSTEM REQUIREMENTS

Telescope with 1.25" focuser tube  
Pentium II-233 MHz and Above  
Microsoft Windows 98/Windows ME/Windows 2000  
32MB of RAM  
100MB of available harddrive space  
CD-ROM Drive  
USB Port

## INSTALLING PHOTOLIB2002 AND THE DIGITAL IMAGER DRIVER

- 1) Insert the PhotoLib2002 CD into your CD-ROM drive
- 2) You should automatically see the PhotoLib2002 window. Double-click **Setup.exe**.

**F** If you don't see the PhotoLib2002 window, open the **Start** menu, select **Run**, type **D:\Setup.exe** (substitute the correct drive if it is not D), click **OK**.

- 3) In the Welcome dialog box, click **OK** to start the installation process.
- 4) Destination Folder indicates where PhotoLib2002 will be installed. If you want to change the destination folder, click **Browse**, and locate the desired folder. Click **Next** to continue.
- 5) Click **Next** in the Select Program Folder dialog box to begin the installation.
- 6) After PhotoLib2002 is installed, a message asks you whether you want to install the Digital Imager Driver. Click **Yes**.
- 7) Click **OK** to install the Version 1.02 driver.
- 8) Click **Yes** to continue.
- 9) Installation is now complete.

## USING THE DIGITAL IMAGER

### BEFORE SETTING UP THE DIGITAL IMAGER

Make sure that PhotoLib2002 and the driver are installed on your computer.

### SETTING UP THE DIGITAL IMAGER

- 1) After the telescope is properly set up, and the desired object is found in the center of the eyepiece, remove the eyepiece and insert the Digital Imager into the diagonal. Secure the Digital Imager by tightening the thumbscrew or eyepiece locking ring.
- 2) Plug the USB plug into the USB port on your computer. The indicator lamp on the Digital Imager glows green when the camera is properly connected to the computer.

**F** If the Digital Imager driver warns you that digital signature is not found and whether you want to continue the installation, click **Yes**.

Double-click the **PhotoLib2002** icon on your desktop to start the program. You can also click the Start Menu, choose **Programs > PhotoLib2002**. Once the PhotoLib2002 is launched, it will automatically go into the **"Video Mode"** (see P.5) and start a window with the view your Digital Imager is currently pointed at (the Video Window). If it does not start automatically, click **Import Photo** on the System Toolbox to bring up the view. If the view appears blurry, adjust the focusers on your telescope to focus the image.

**Single Shots:** Simply press the button on the Digital Imager hand control, or click **Single Capture** on the System Toolbox in PhotoLib2002. PhotoLib2002 will give you another window containing the image you just captured.

**Video Recording:** Click **Video Capture** on the System Toolbox (see P.6), then **OK** to start recording. To stop the recording, press **ESC** or click anywhere in the window. Click **Video Playback** button to view the video.

### CUSTOMIZING THE SETTINGS

In the **"Video Mode"**, the **Video Source** and **Video Format** on the System Toolbox let you modify how the view is displayed on your computer screen.

**Video Source** allows adjustments to the brightness, contrast, saturation, and orientation of the view.

**Video Format** allows adjustments to the size and format of the view.

### SAVING THE IMAGE/VIDEO

The image or video you captured is not permanently stored until it has been saved. To save it, make sure the window containing the image/video you wish to save is activated, either click the **Save** button in the Main Toolbar or choose **File>Save or Save as**.

## ABOUT PHOTOLIB2002

PhotoLib2002 delivers a user friendly environment for importing images captured by Digital Imager, digital camera, scanner, or other TWAIN or VFW devices. Moreover, PhotoLib2002 provides image editing tools to help you alter the images captured or create drawings from scratch.

### AN OVERVIEW OF THE WORK AREA

**Menu Bar** — This contains menus for performing commands. The commands are grouped by topic. For example, the View menu includes commands to open tool bars or palettes.

**Main Toolbar** — See P.2.

**System Toolbox** — See P.2.

**Toolbox** — See P.2.

### THE VIDEO WINDOW

The Video Window shows the view your Digital Imager is currently pointed at. To open the Video Window, click **Import Photo** in the System Toolbox. No image or video is captured at this point. See P.3 for capturing the image or video.

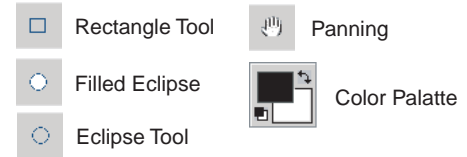
### VIDEO MODE

PhotoLib2002 goes into "Video Mode" when the Video Window is activated. In "Video Mode", the following options are available on the menu bar: File, Edit, View, Video View, Video Setup, Capture, and Help. The Toolbox and other image editing functions are not available in "Video Mode".

**F** Tips **M** Warning

## IMAGE MODE

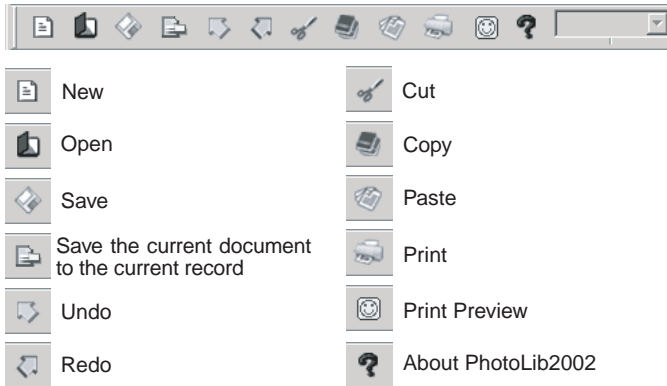
PhotoLib2002 goes into "Image Mode" when an image window is activated or a new file is created. You can now edit the image using the Toolbox and the following options on the The following toolbars provide single-click access to many PhotoLib2002 features. To display these toolbars, select **View** on the menu bar, then the toolbar you wish to view.



## PHOTOLIB2002 TOOLS

The following toolbars provide single-click access to many PhotoLib2002 features. To display these toolbars, select **View** on the menu bar, then the toolbar you wish to view.

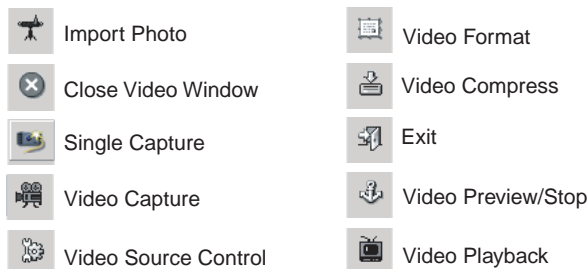
### MAIN TOOLBAR



### SYSTEM TOOLBOX



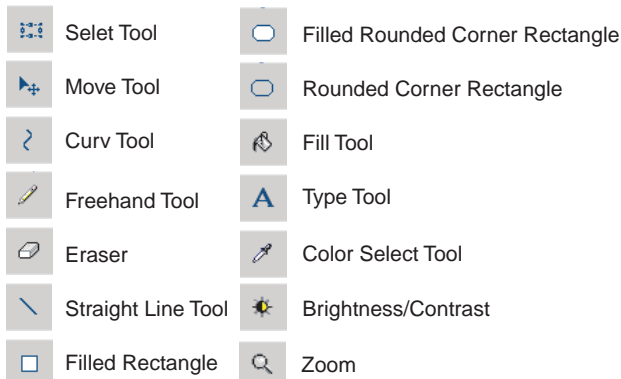
The System Toolbox on the menu bar provides instant modifications to the image you are currently viewing.



### TOOLBOX



The Toolbox includes the tools that let you draw, paint, erase, use type, change colors, choose stroke styles, change brightness/contrast, and view color information in RGB.



## CARE FOR YOUR DIGITAL IMAGER

The following tips help ensure your Digital Imager performs at its best.

- 1) Disconnect the Digital Imager from the telescope and your computer before cleaning.
- 2) Clean the surface of the Digital Imager with dry soft cloth only. Do not use any cleaning agent with alcohol content. Do not clean with water.
- 3) Keep the Digital Imager away from water, dust, dew, grease, smoke, direct sun light, and heat source.
- 4) Use the Digital Imager indoor whenever possible.
- 5) The Digital Imager should be operated in a 0° to 40°C environment. Do not operate under humid, vibrating, and dusty conditions.

## SPECIFICATIONS

Sensor :	1/3" CMOS
Video Format :	24-bit
Shutter :	Electronic controlled
Resolution :	640x480
Pixels :	300,000
Frame Rate :	30fps(CIF), 15fps (VGA)
Minimum Illumination :	3 lux
S/N Ratio :	Equals to 48dB or above
Aperture :	1.25"
Power :	USB 9 5V)
Operating Environment :	0 - 40° C

M

**DO NOT POINT THE DIGITAL IMAGER DIRECTLY TO THE SUN THROUGH A TELESCOPE. THE INTERNAL HEAT BUILD-UP WILL DAMAGE THE DIGITAL IMAGER ELEMENTS.**